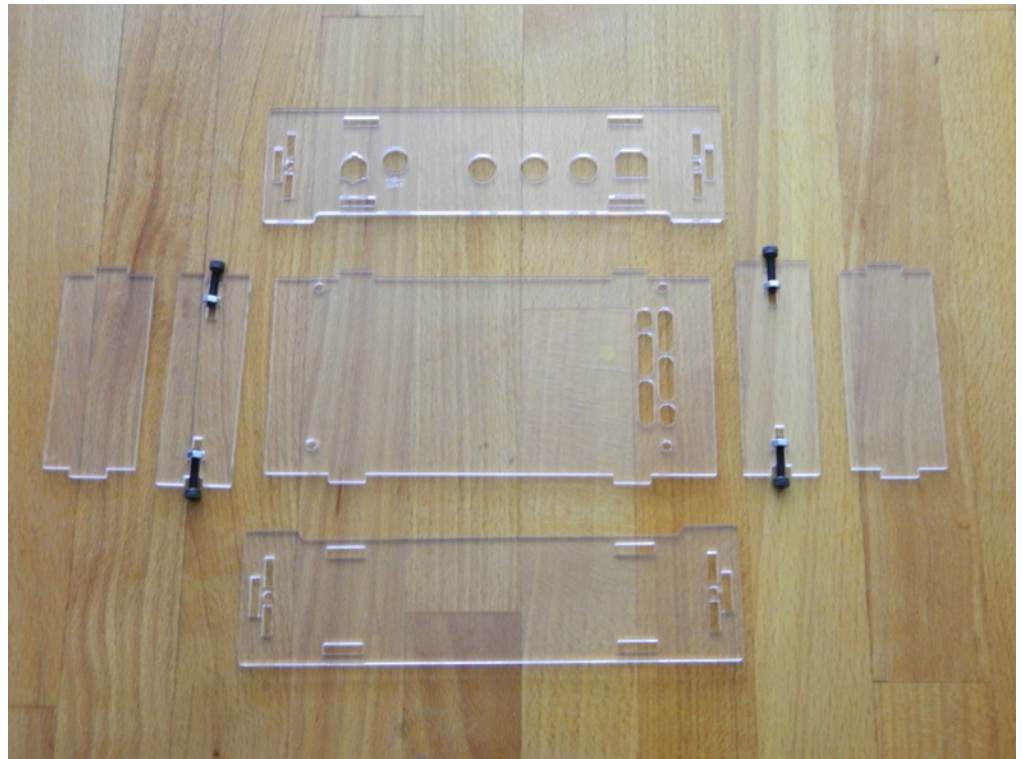


# Acrylic Case for Peaberry SDR

Page 1/3

Take some time to study this first picture. The pieces are laid out how they will fit together. The top piece is not in the photograph.

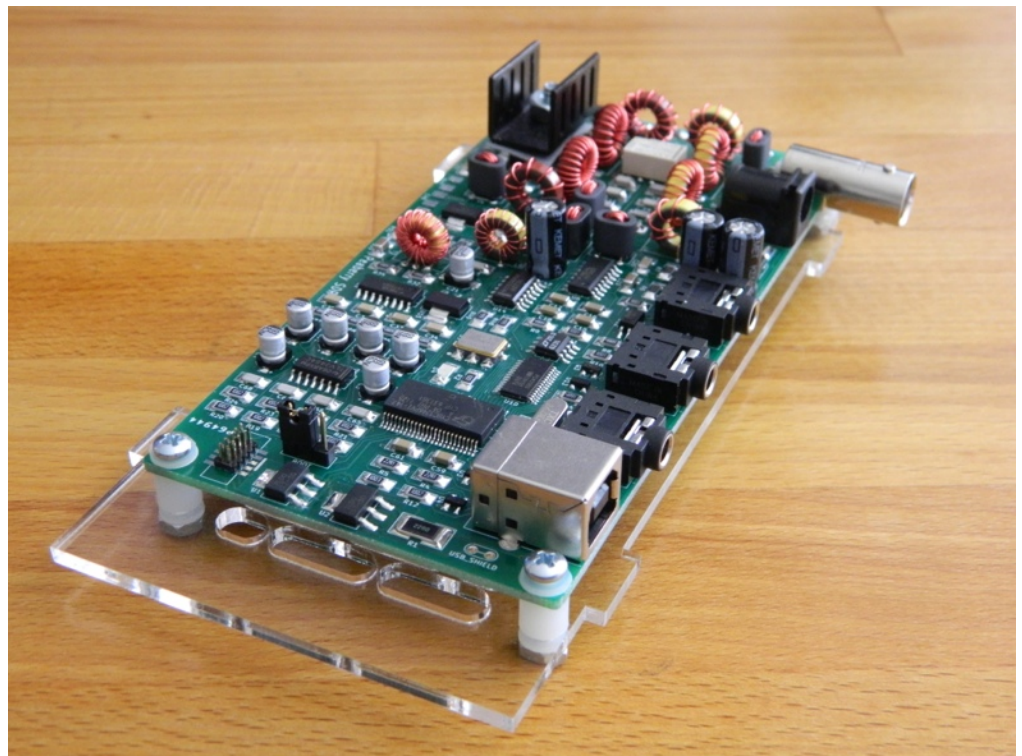
All pieces will have a protective film on them. Use your fingernail to lift a corner and it will peel off easily.



Begin by attaching the circuit board to the bottom panel. The 1/2" #4 screws that came with your radio aren't long enough so use the 5/8" #4 screws that came with the case. The case also comes with four more nylon washers to put between the nut and the acrylic.

Do not tighten the nuts yet. Allow the board to float around for now.

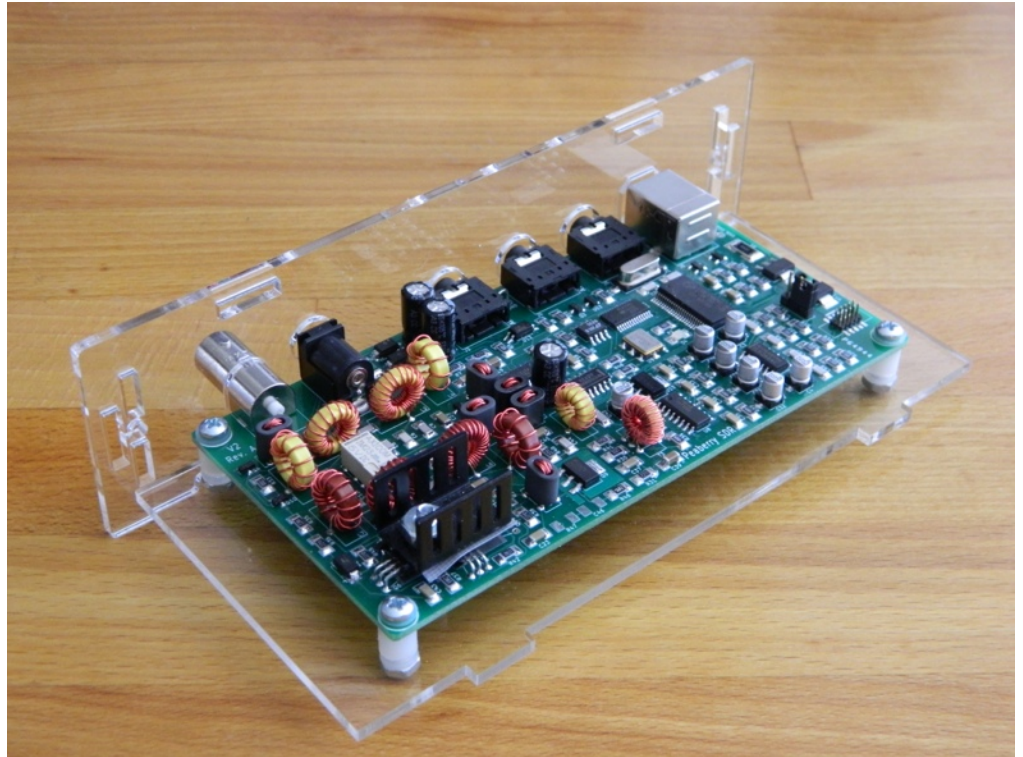
Ensure the cooling vents are positioned as in the photograph.



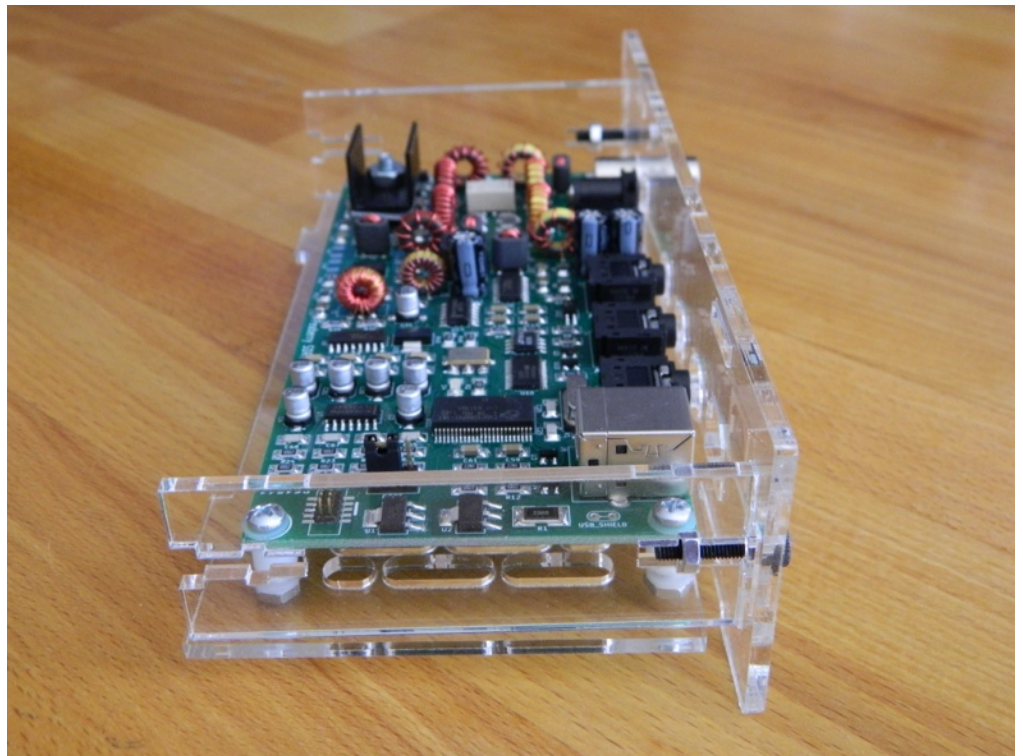
# Acrylic Case for Peaberry SDR

Attach the connector panel next. With this in place you can tighten the nuts holding the circuit board.

Expect some resistance the first time you insert a tab into a slot.



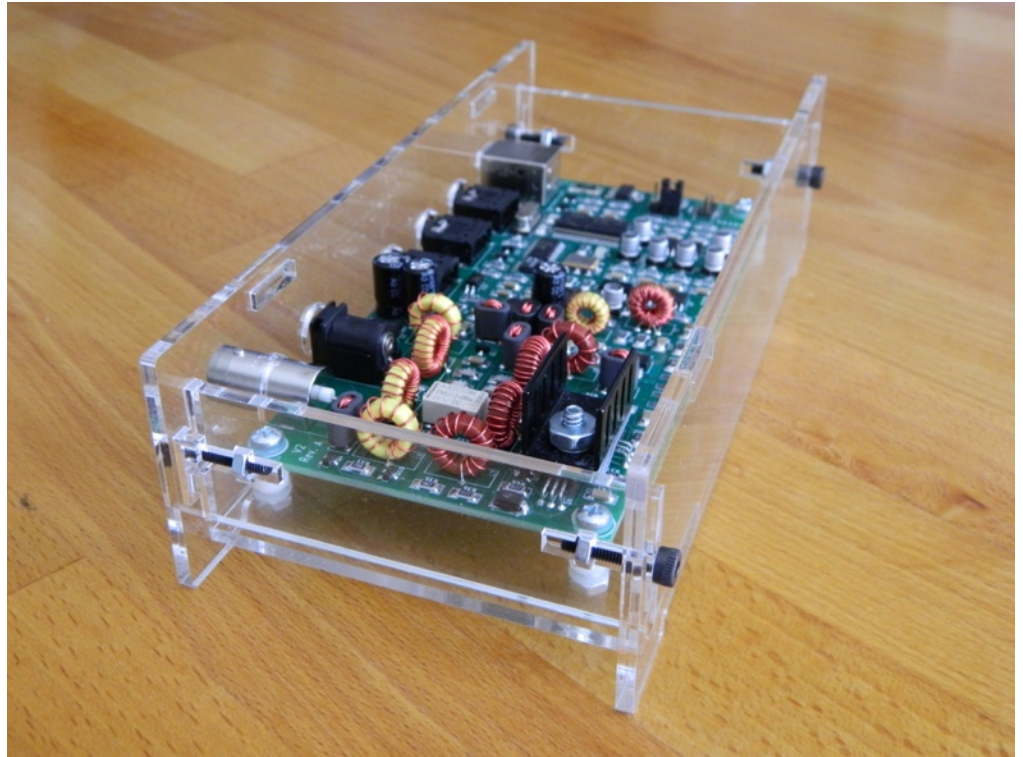
Install the inner side panels and the M3 hardware. Hold the nuts in place with your fingers when starting the screw. Install the screws only finger-tight for now.





# Acrylic Case for Peaberry SDR

Install the next panel and M3 hardware. Once in place you will have to loosen the M3 hardware and install the remaining three panels. This procedure is a little wonky but you'll get through it with a bit of trial and error.



With all the panels installed you can tighten the M3 hardware with the included wrench. Insert the long end of the wrench into the screw caps so you do not over-tighten these.

Enjoy your new case. Clean with a damp cloth using regular soap if needed. Do not use any ammonia-based cleaners.

